



EXECUTIVE SEARCH PROFILE FOR RSU PRESIDENT



ROGERS STATE
UNIVERSITY

CLAREMORE | BARTLESVILLE | PRYOR | ONLINE | WWW.RSU.EDU | 800-256-7511



PRESIDENTIAL PROFILE

The Board of Regents governing The University of Oklahoma, Cameron University, and Rogers State University invites applications and nominations for the position of President of Rogers State University. The President is the chief executive officer of the institution and reports directly to the seven member Governor appointed Board of Regents. The selected individual will assume the Presidency in fall 2025.

The next RSU President will have the opportunity to lead the University toward future success by assessing and aligning University operations to implement strategies that increase enrollment, retention, and completion amidst a changing student landscape. The President will continue to enhance the University's image and reputation, positioning it as a valuable resource for education, community, and economic development in northeast Oklahoma. Commitment to fundraising, economic development, and community relations is key with a focus on strategic partnerships, grant sourcing, and innovative fundraising initiatives. The next President will lead and manage change in a shifting higher education environment that will require navigating current and future trends impacting higher education through innovative, entrepreneurial thinking, and openness to strategic change and new possibilities.

THE UNIVERSITY

Since being established as a four-year regional university in 1999, Rogers State University has quickly developed into a dynamic university widely recognized for its high-quality academic programs, distance learning options, and high-technology learning environment. RSU stands as the only public, four-year, residential university in the Tulsa metropolitan area, which allows students the opportunity to fully immerse themselves in the college experience while living in one of its three on campus student apartment communities. Students also may live at home while enjoying the flexibility of taking classes at RSU's three physical campuses (Claremore, Bartlesville and Pryor) or through the nationally recognized RSU Online program.

The Claremore campus houses RSU's residential community with capacity for more than 800 students in three student apartment communities (constructed in 2001, 2011 and 2015) and family housing. Residents can choose from several floor plans within the housing communities, which are adjacent to Chapman Dining Hall (opened in 2014). Chapman Dining Hall features a dedicated emergency generator for food preparation during long-term power outages and a basement storm shelter large enough to hold all campus residents.

The RSU campus in Bartlesville is located in a nine-story building in the heart of downtown and serves as the educational anchor for the revitalized business district.

The Pryor campus is located in a two-story, 38,000-square-foot facility (opened in 2014) in the MidAmerica Industrial Park, which donated the facility to address the region's workforce needs. The largest single gift in the university's history, the approximately \$10 million project included site development and construction on the 83-acre property.

RSU offers a variety of master's, bachelor's and associate degrees to assist students in achieving their academic goals, as well as a vibrant campus life with student organizations to foster development inside and outside of the classroom. In addition, RSU has 12 athletic teams in six sports and is a member of the Mid-America Intercollegiate Athletics Association. RSU was the first university in Oklahoma to offer esports, competitive video gaming, as an official university activity. The undergraduate enrollment is approximately 3,100 with 120 graduate students. The University has 90 full-time faculty and 91 part-time faculty. The annual budget is approximately \$40 million.



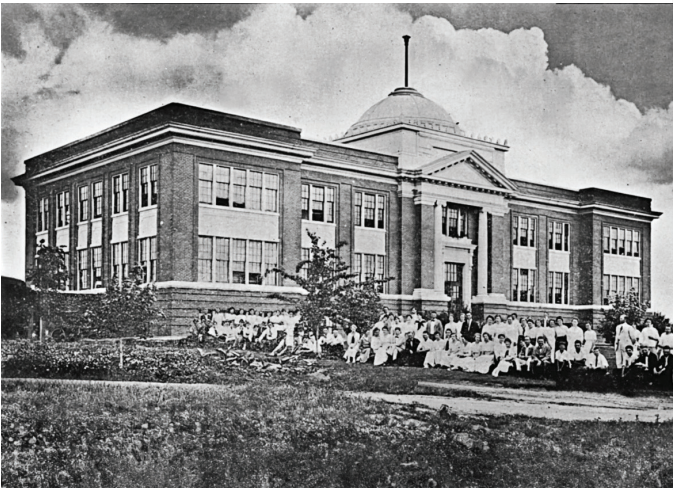


UNIVERSITY GOVERNANCE

The university is a part of the Oklahoma State System of Higher Education, which is composed of all higher education institutions supported wholly or in part by state appropriations. The Oklahoma State Regents for Higher Education is the coordinating board for the system.

The university – as part of the public educational system of the state, established by legislative action and supported by annual legislative appropriations – places emphasis on sound scholarship, good citizenship, and the duties of the individual to the community and the commonwealth.

By constitutional enactment, the governance of the university is vested in the OU Board of Regents, a board consisting of seven members appointed by the governor with the advice and consent of the State Senate. Each member is appointed to serve for seven years, except when appointed to fill an unexpired term, and is subject to removal from office only as provided by law for the removal of officers not liable to impeachment. The Oklahoma State Regents and the university regents approve the requirements for admission and graduation, the degrees offered, and the fees and expenses. The boards reserve the right to change these requirements.



RSU PRIDE

RSU holds a unique position as Oklahoma's newest four-year regional university, but with roots that extend back to the earliest days of statehood, RSU was founded in 1909 as Eastern University Preparatory School in Claremore. Historic Preparatory Hall, known for its iconic gold dome, was the first building on the school's campus. However, the school closed only a few years after it opened. Taking its place was the Oklahoma Military Academy (OMA), which operated on the Hill from 1919 to 1971. Known as the "West Point of the Southwest," OMA has an extensive register of graduates who became great leaders, both in military and civilian life. More than 2,500 OMA graduates served in the Armed Forces of the United States during World War II, the Korean War, and the Vietnam War. In 1971, OMA closed and Claremore Junior College opened on the Hill, serving more than 400 students. The junior college grew rapidly in the 1970s, and by the time it was renamed Rogers State College in 1982, the institution boasted a variety of associate degree programs, distance learning capabilities, a new radio and television station and intercollegiate athletics. In 1999, the Oklahoma Legislature renamed the institution Rogers State University and charged it with seeking accreditation as a four-year university offering bachelor's and associate degrees. Its first graduate program, a Master of Business Administration, launched in 2014 and graduated its first class in May 2016.

RSU's nursing program is considered one of the most rigorous in the state with graduates consistently exceeding state and national averages for nursing exams. The university has quickly established itself as an institution of choice in the Tulsa metro for students who plan to study biology and apply to medical school, dental school or other related medical professional graduate programs. In the past few years, more than 100 RSU students have been accepted into health-related graduate programs.





ATHLETICS AT RSU

Rogers State University athletics teams compete in 12 NCAA Division II sports, including men's and women's golf, basketball, cross country, soccer, and track and field, along with men's baseball and women's softball. The RSU Hillcats softball team won the 2022 NCAA Division II softball national championship. RSU teams have appeared in national rankings in 10 sports and have won 11 conference regular season and tournament championships.

Rogers State begins its sixth season as a member of the Mid-America Intercollegiate Athletics Association (MIAA) in 2024-25. The MIAA is a 14-school collegiate athletic conference headquartered in Kansas City, Missouri. The footprint of the conference reaches five states: Arkansas, Kansas, Missouri, Nebraska, and Oklahoma, with schools in the metro areas of Kansas City, Oklahoma City, Tulsa, and Wichita.

Over the past 112 years, the MIAA has gained the reputation of being one of the best NCAA Division II conferences in the nation. Student-athletes have won 58 NCAA Division II team championships and well over 400 individual national titles. In the classroom, hundreds of student-athletes have earned Academic All-America and All-District honors. The MIAA has seen its members claim 27 NCAA team championships in the last 12 athletic years with at least one championship every year. Over the past three athletic years, MIAA teams have won eight NCAA team championships with two undefeated seasons.



ROGERS STATE

UNIVERSITY

PRESIDENTIAL SEARCH

The Board of Regents governing The University of Oklahoma, Cameron University, and Rogers State University invites applications and nominations for the position of President, Rogers State University. The President is the chief executive officer of the institution and reports directly to the seven member Governor appointed Board of Regents. The selected individual will assume the Presidency in fall 2025.

Rogers State University (www.rsu.edu) is a regional four-year university serving northeastern Oklahoma with three full-service campuses in Claremore, Bartlesville, and Pryor with the main campus in Claremore, Oklahoma. RSU is recognized for high-quality academic programs, a nurturing scholastic atmosphere, distance learning options, and a high-technology learning environment. RSU offers a variety of master's, bachelor's and associate degrees to assist students in achieving their academic goals, as well as a vibrant campus life with student organizations to foster development inside and outside of the classroom. In addition, RSU has 12 athletic teams in six sports and is a member of the Mid-America Intercollegiate Athletics Association. RSU was the first university in Oklahoma to offer esports, competitive video gaming, as an official university activity. The undergraduate enrollment is approximately 3,100 with 120 graduate students. The University has 90 full-time faculty and 91 part-time faculty. The annual budget is approximately \$40 million.

The next RSU President will have the opportunity to lead the University toward future success by assessing and aligning University operations to implement strategies that increase enrollment, retention, and completion amidst a changing student landscape. The President will continue to enhance the University's image and reputation, positioning it as a valuable resource for education, community, and economic development in northeast Oklahoma. Commitment to fundraising, economic development, and community relations is key with a focus on strategic partnerships, grant sourcing, and innovative fundraising initiatives. The President of RSU will be a seasoned executive leader with an established record of achievement and success in progressively responsible positions, with a passion for public higher education. An advanced degree is required, candidates holding an earned doctorate are preferred.

Review of materials will begin immediately and continue until the appointment is made. For best consideration, letters of interest, full curriculum vitae or resume and the names and contact information for at least three references should be provided by October 1, 2024. Information should be submitted electronically to:

Mackenzie Wilfong, J.D.
Executive Secretary of the Board of Regents RSUSearch@ou.edu
Rogers State University is an EEO Employer.

OPPORTUNITIES AND CHALLENGES

The president serves as the chief executive officer of the University, providing leadership and oversight for all aspects including academics, finance, planning, enrollment, student affairs, athletics, advancement, and other key areas. The provost, vice presidents, and several other staff members report to the president, who partners with and empowers the senior team to ensure that the strategic direction and policies of the University are aligned with its mission and strategic direction. The incoming President will serve as the key leader in fundraising, continuing commitment to student success, financial and operational acumen, and development of effective external partnerships. The next President will have the opportunity to create a compelling vision for the University and develop an ambitious strategic plan that will bring together all stakeholders and address the goals of the University, enabling it to continue to serve as a leader in Northeast Oklahoma. In the face of shifting political climates and decreases in public support for education, the next President will be a tireless champion for the University and will seek to build connections and garner financial support from a wide array of sources, both public and private.

QUALIFICATIONS & PERSONAL CHARACTERISTICS

The President of RSU will be a seasoned executive leader with an established record of achievement and success in progressively responsible positions, with a passion for public higher education. An advanced degree is required, candidates holding an earned doctorate are preferred. Additionally, the next President of RSU will:

- Show a genuine passion for the success of students;
- Display an understanding of public education systems and a commitment to shared governance;
- Model a history of successful leadership in a complex, multi-faceted organization, particularly in times of transition and growth;
- Demonstrate superb communication, interpersonal, and relationship-building skills;
- Facilitate strategic visionary direction of the University through planning and executing long-term vision and strategy, inspiring and empowering others toward action;
- Demonstrate skills in developing financial support from both public and private sources and the proven ability to grow resources in times of financial constraint;
- Exude passion for public higher education and possess a deep understanding of the current issues impacting education today, both at the state and national levels;
- Support and promote high academic standards and an excellent professional reputation;
- Foster a climate of collaborative and inclusive leadership and the ability to build and develop a senior team;
- Show an appreciation for the role of athletics within a higher education institution;
- Actively show an interest in learning about the history and culture of RSU and the state;
- Passionately serve as an ambassador for RSU and work effectively with state governments, local businesses, and other partners; and
- Possess a solid commitment to the principles of accountability and the policies and directives of the Board of Regents; demonstrated ability to work successfully with a Board.

It is the expectation of the RSU community and the Board of Regents that the successful candidate be willing to make a long-term commitment to the University and the State.

APPLICATION AND NOMINATION PROCESS

Review of materials will begin immediately and continue until the appointment is made. For best consideration, letters of interest, full curriculum vitae or resume, and the names and contact information for at least three references should be provided by October 1, 2024. ***All attachments should be in Microsoft Word or PDF format.***

Nomination letters should include the name, position, telephone number, and email address of the nominee.

Information should be submitted electronically to:

Mackenzie Wilfong, J.D.
Executive Secretary of the Board of Regents
RSUSearch@ou.edu

For questions related to the search process, calendar, or position profile, please contact Mackenzie Wilfong at RSUSearch@ou.edu. If you prefer to visit by phone please include availability and contact information in your initial email.

Rogers State University, in compliance with all applicable federal and state laws and regulations does not discriminate on the basis of race, color, national origin, sex, sexual orientation, genetic information, gender identity, gender expression, age, religion, disability, political beliefs, or status as a veteran in any of its policies, practices, or procedures. This includes, but is not limited to: admissions, employment, financial aid, and educational services. Inquiries regarding non-discrimination policies may be directed to:

Jeana Rae Conn | Title IX Coordinator | 918-343-7707 | jconn@rsu.edu